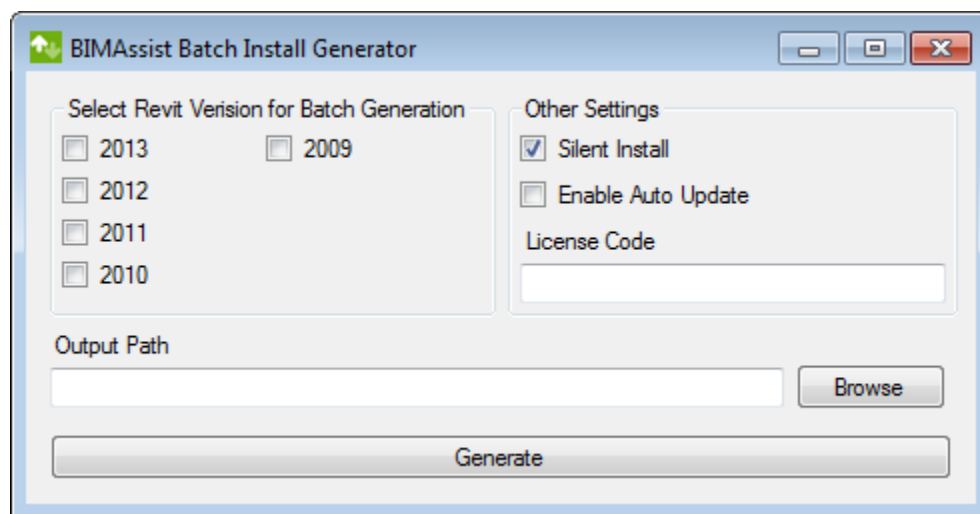


BIMAssist Batch Deployment



The BIMAssist Batch Install Generator provides an intuitive, easy to use method of generating deployment packages that may be used to automate the deployment of BIMAssist. A deployment package consists of a folder containing an installation batch file and associated BIMAssist installation applications.

The utility is fully compatible with all versions of BIMAssist and supports automated installations to Revit 2009, 2010, 2011, 2012, and 2013. Deployment packages generated by the application can be used both for an initial installation of BIMAssist and for updating existing installations. The workflow described below applies to both cases.



The first step in creating a deployment package is to select the versions of Revit that will be targeted for add-in installation. All versions selected will be included in the deployment package.

Next, the desired installation behavior can be configured through the Silent Install, Enable Auto Update, and License Code options:

- Silent Install: When enabled, all prompts will be suppressed during the BIMAssist installation process. It is necessary to leave this option selected for fully automated installations.
- Enable Auto Update: When enabled, BIMAssist will not automatically check for application updates from installed workstations. In environments where user installation rights are restricted, it is typically desirable to leave the Enable Auto Update option unchecked. In this scenario, BIMAssist updates are deployed by a client's IT personnel with help of the Batch Install Generator.
- License Code: Each copy of BIMAssist must be licensed before it can be used. If a license code is provided through the Batch Install Generator, it will be pre-populated within the BIMAssist licensing interface.

The final step is to define the Output Path for the deployment package. The Browse button may be used to graphically navigate to the desired path, or it may be manually entered into the text box.

When the Generate button is pressed, the application will create a folder containing the generated batch file along with all necessary BIMAssist installation applications. To install BIMAssist on a target workstation, simply execute the batch file.